



## Phoebe Chromatic Art Finishes

Here are just a few of the thousands of possibilities in one of our Art Finishes for your Phoebe Chromatic. The Art Finishes are only for the Phoebe Chromatic, the other dulcimers in our line are finished as they pictured. These are all close up photos of about a 6 inch by 6 inch area. If you want a dulcimer that is unique and distinctive, this could be it. No two can be alike even if the same color scheme is used.

The crackle finishes are done with Old Fashioned Milk Paint. The base coat is laid down, and allowed to dry. Then a special Crackle Medium is applied, and allowed to dry. Then the top color is applied, and the cracks form as it is drying. Then a couple coats of polyurethane varnish are applied to protect the paint. This finish is tough as nails, it will not chip or peel, and is water resistant.

Solid colors are also possible. Black is a standard color in hammered dulcimers, but other colors would be equally nice, and unique. Soldier Blue? Dark Green? Salem Red? Other possibilities would include spatter paint over a base color. How about a Jackson Pollock style, stand back, and throw paint at it. Again, the possibilities are infinite. If you have an idea, give us a call, and we'll talk it over.



Soldier Blue over Burnt Orange

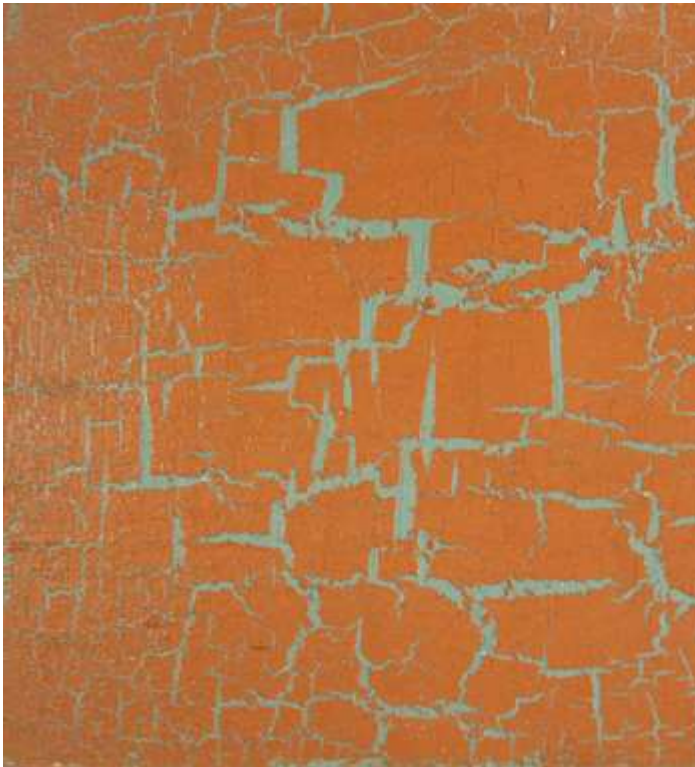
Black over Barn Red



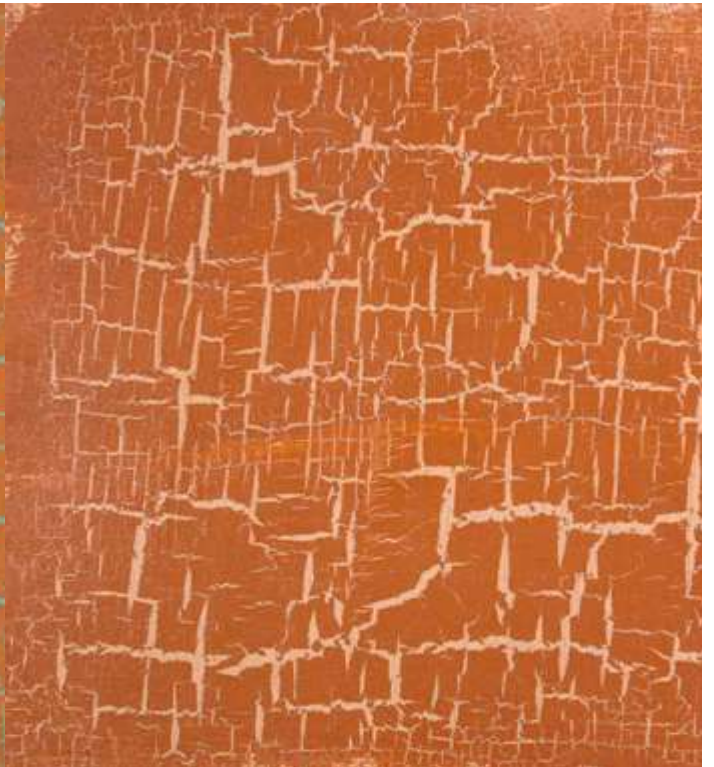
Black over Turquoise



Black over Natural Wood



Burnt Orange over Turquoise



Burnt Orange over Cream



Pig Skin over White



Pig Skin over Barn Red



Beige over Light Cream



Turquoise over Black



Light Cream over Black